

JAN RENOU

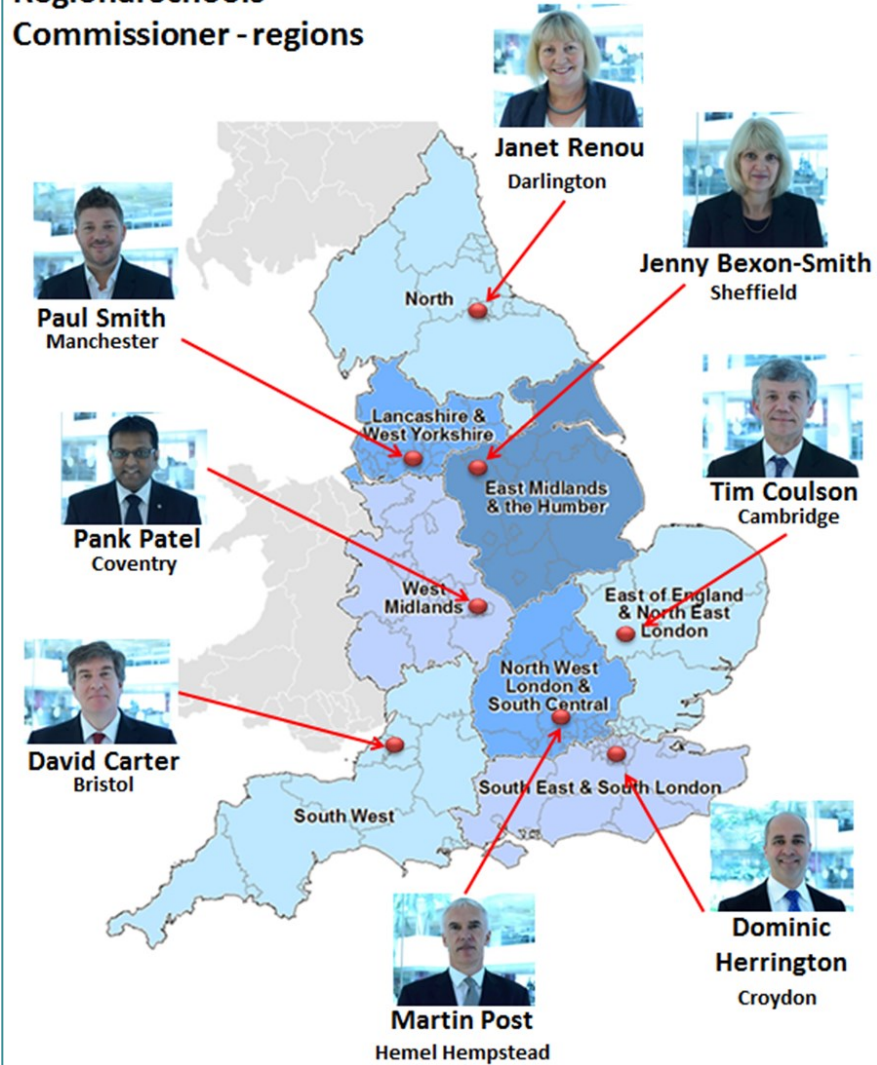
**Regional Schools Commissioner
for the North of England**

**Schools NorthEast Summit
October 2014**



Department
for Education

Regional Schools Commissioner - regions



North
Jan Renou

Lancashire and West Yorkshire
Paul Smith

East Midlands and the Humber
Jenny Bexon-Smith

West Midlands
Pank Patel

East of England and North East London
Dr Tim Coulson

South West
Sir David Carter

North West London and South Central
Martin Post

South East and South London
Dominic Herrington



Department
for Education

RATIONALE FOR THE RSCs

Rapid growth of Academies programme

May 2010 – 203 academies

Oct 2014 – 4243 academies

Self-improving, school led system

DfE review on decision making

**Needs to lie closer to schools with stronger
influence from education leaders**



KEY DECISIONS ON BEHALF OF SOS

SUPPORTED BY AN ELECTED HEADTEACHER BOARD

- Tackling educational underperformance or inadequate governance in open academies
- Approving new academies and changes to open academies
- Managing regional sponsor market
- Advising on free schools, UTCs and studio schools



OUR REGION

14 Local Authority areas

237 open academies

55 sponsored

182 converter

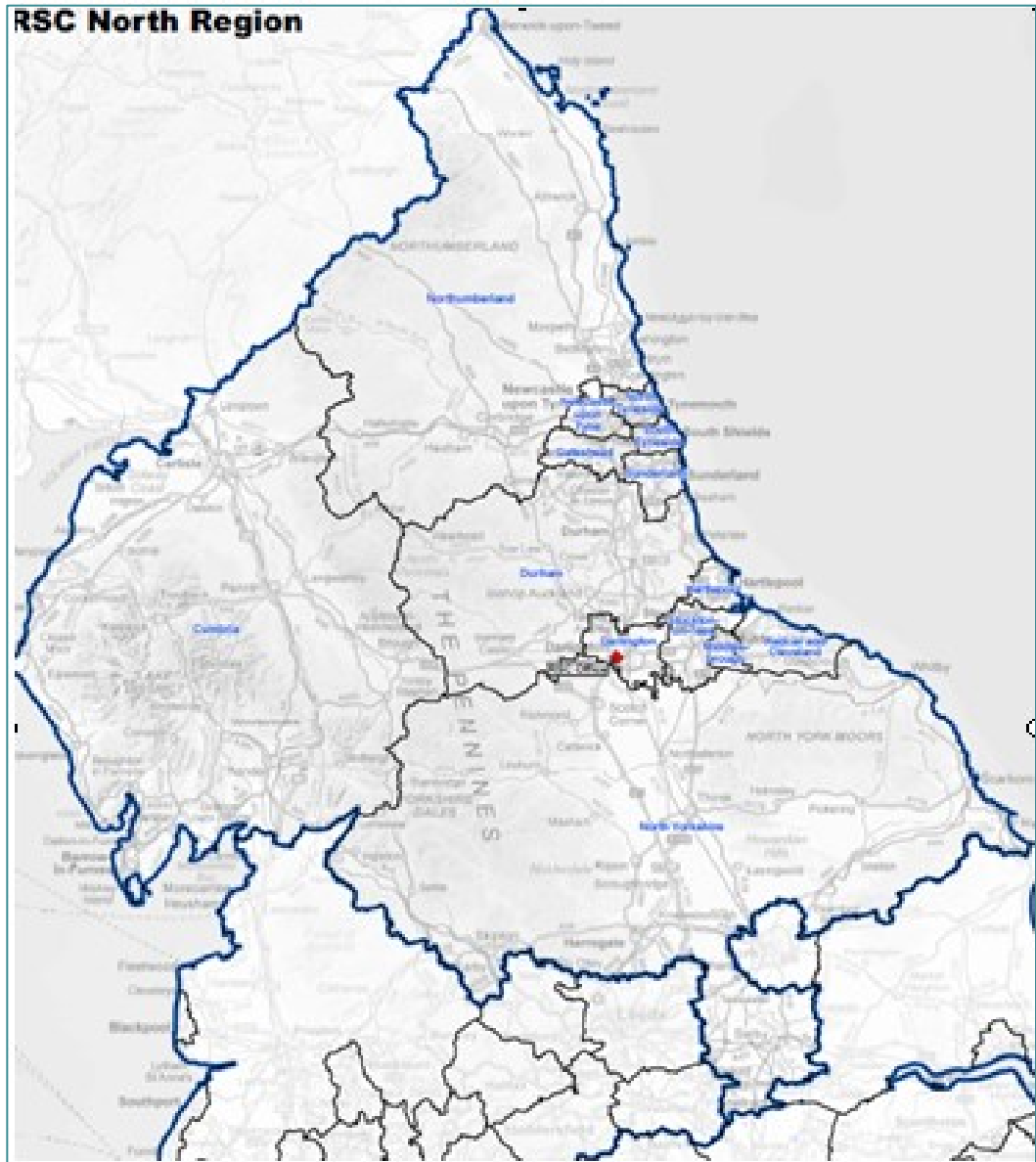
8 open free schools

25 academies in pipeline



Department
for Education

RSC North Region



RSC PERSONAL BACKGROUND

THIRTY FIVE YEARS IN EDUCATION

- 11 years Vice Principal inner city Derby
- 12 years as Head and Executive Headteacher
- National Leader of Education and National Support School
- Teaching school and alliance
- OFSTED additional inspector



Department
for Education

**“Children get one chance in
education - it must be the best ”**

HEADTEACHER BOARD: NORTHERN REGION

In alphabetical order of surname

ANDY BAYSTON	Harrogate High School	North Yorkshire
ZOE CARR	Town End Academy	Sunderland
CHRIS CLARKE	Queen Elizabeth's Kirkby Lonsdale	Cumbria
NICK HURN	Cardinal Hume Catholic School	Gateshead
LESLEY POWELL	The Academy at Shotton Hall	County Durham
LES WALTON	Northern Education Trust	Newcastle Upon Tyne

